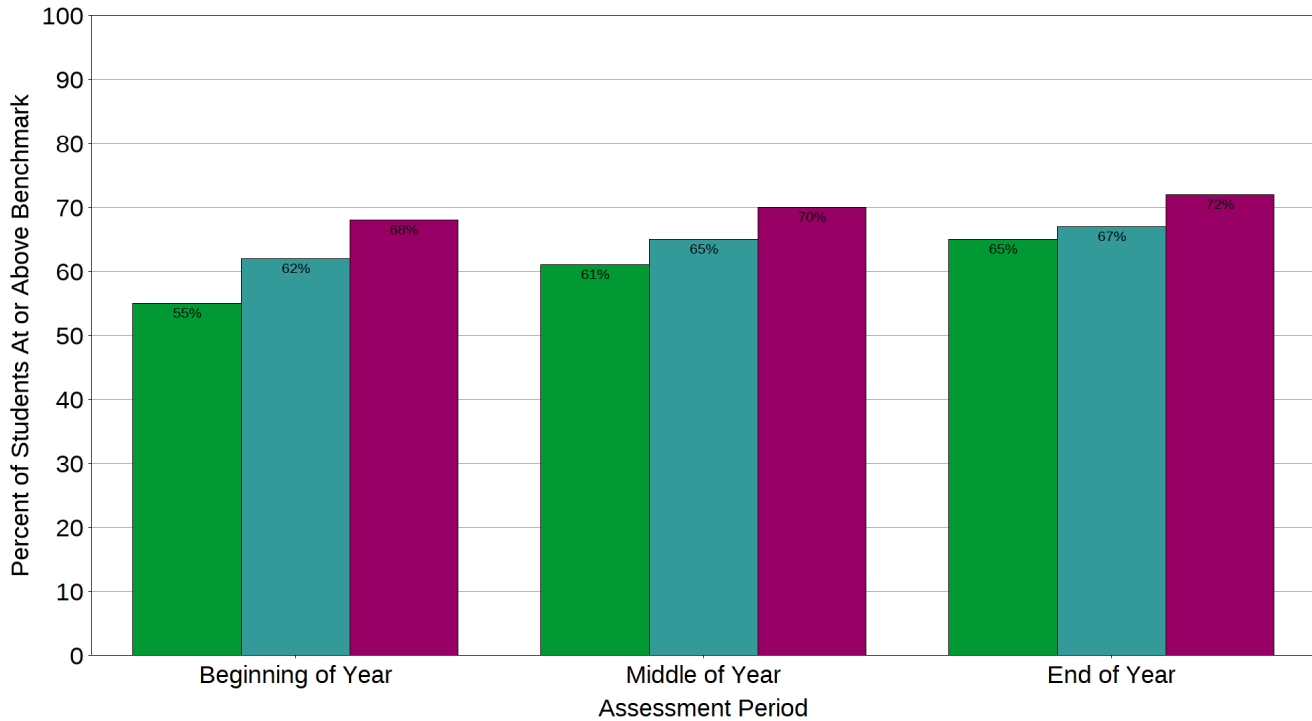


### Multi-Year Percent at Benchmark

Acadience Reading

## Reading Composite Score



- 2012-2013**  
Beginning of Year: 55% (58 of 106)  
Middle of Year: 61% (71 of 116)  
End of Year: 65% (72 of 110)
- 2013-2014**  
Beginning of Year: 62% (65 of 105)  
Middle of Year: 65% (75 of 116)  
End of Year: 67% (74 of 110)
- 2014-2015**  
Beginning of Year: 68% (76 of 111)  
Middle of Year: 70% (83 of 118)  
End of Year: 72% (86 of 119)